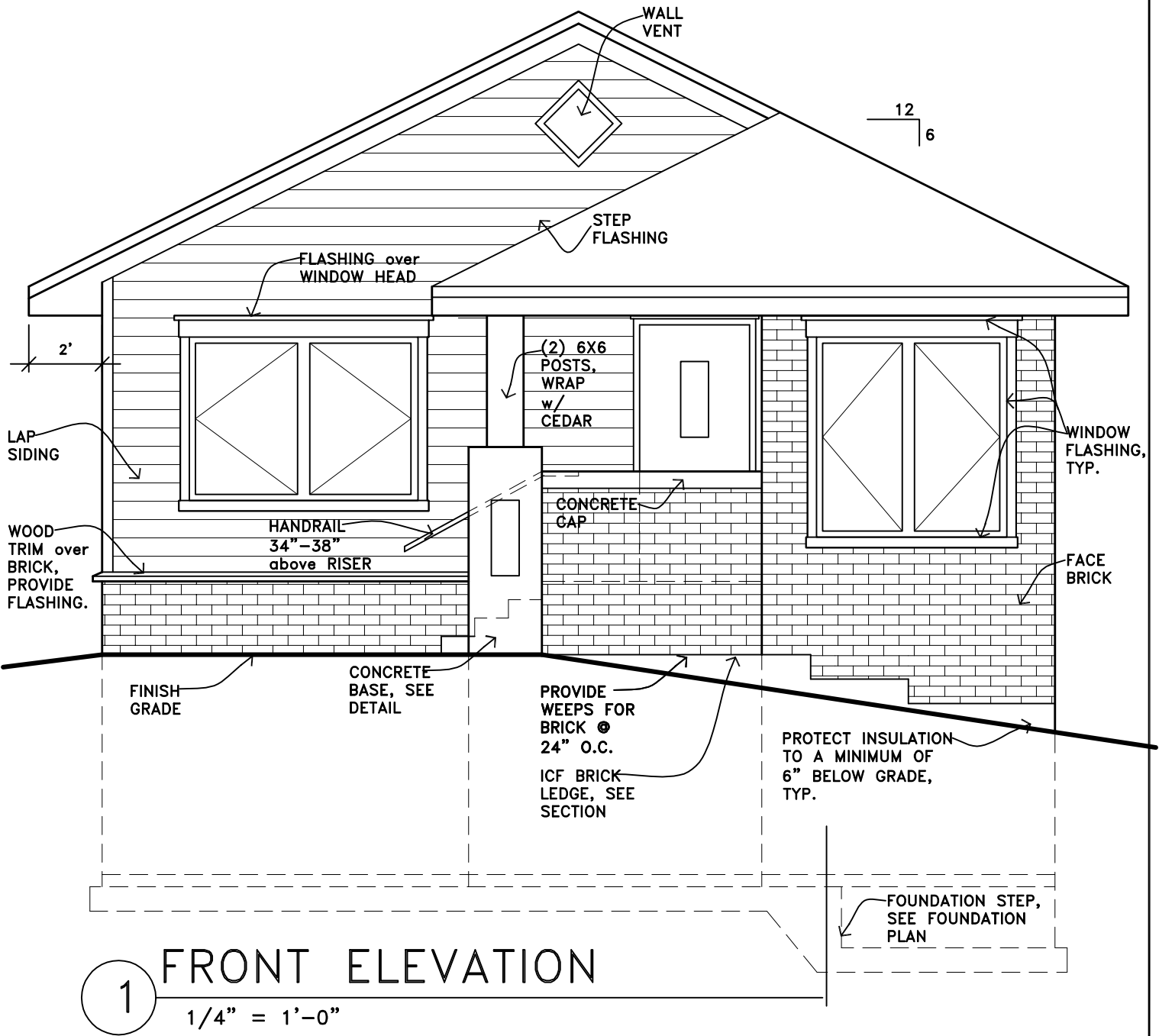
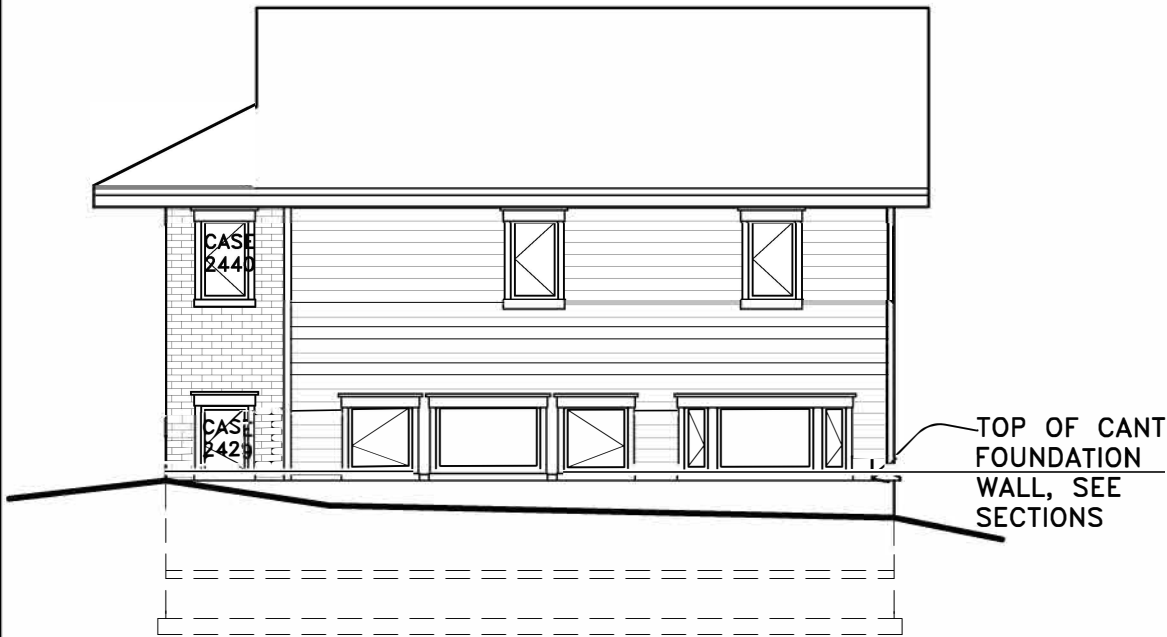
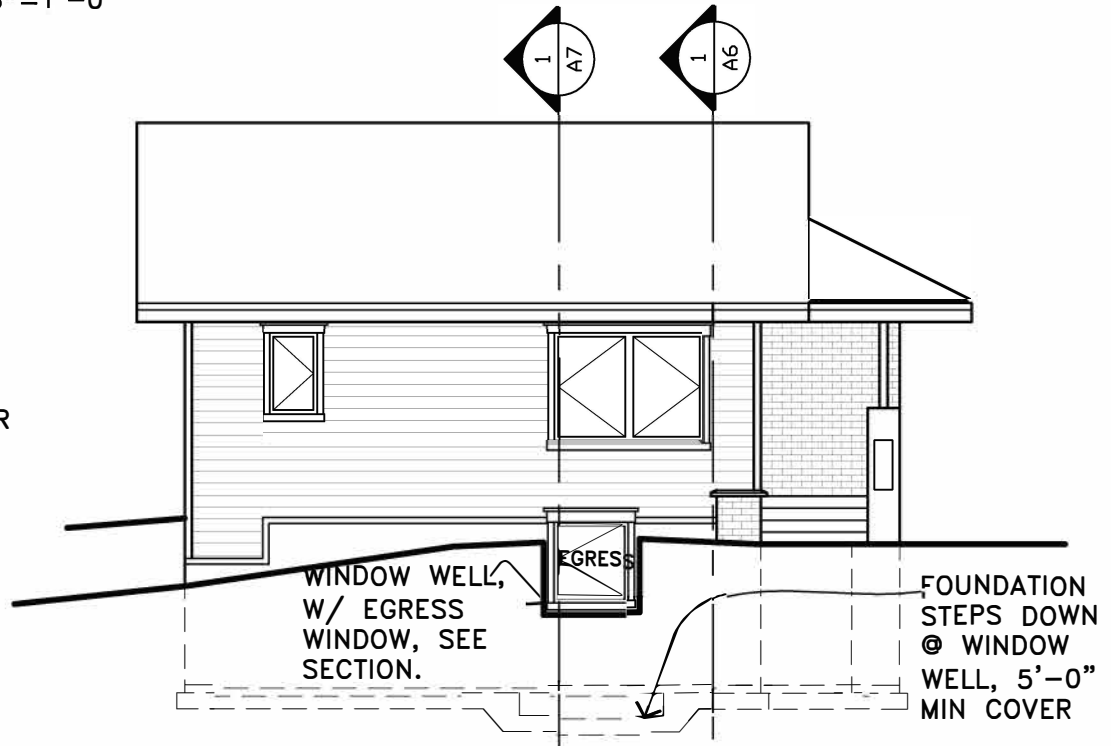


THIS PAGE INTENTIONALLY LEFT BLANK





1 EAST ELEVATION
1/8" = 1'-0"



NOTE:
SEE FRONT
ELEVATION FOR
TYPICAL
EXTERIOR
NOTATIONS.

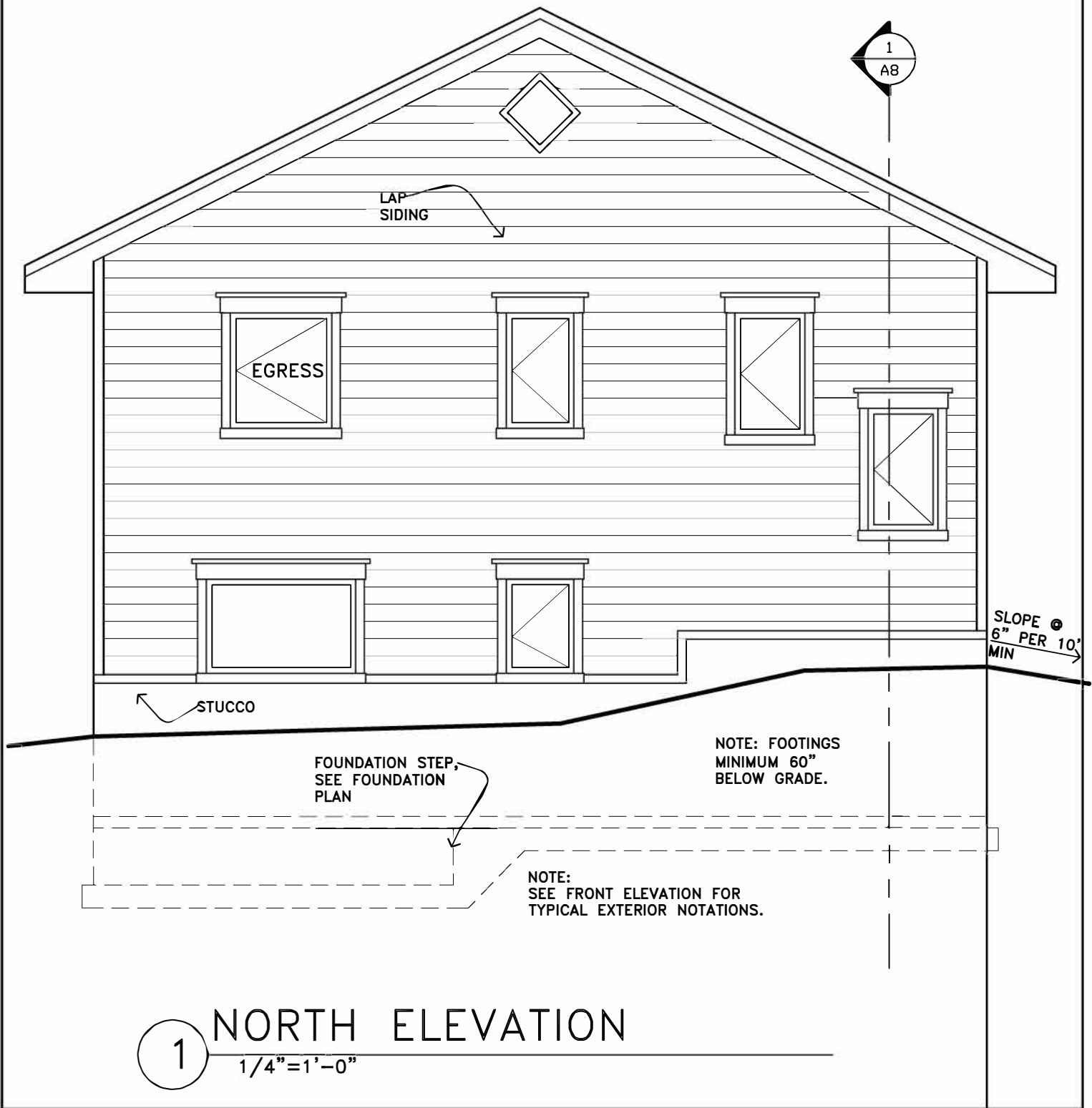
2 WEST ELEVATION
1/8" = 1'-0"

CS&I BUILDING SAFETY
DULUTHmn.gov

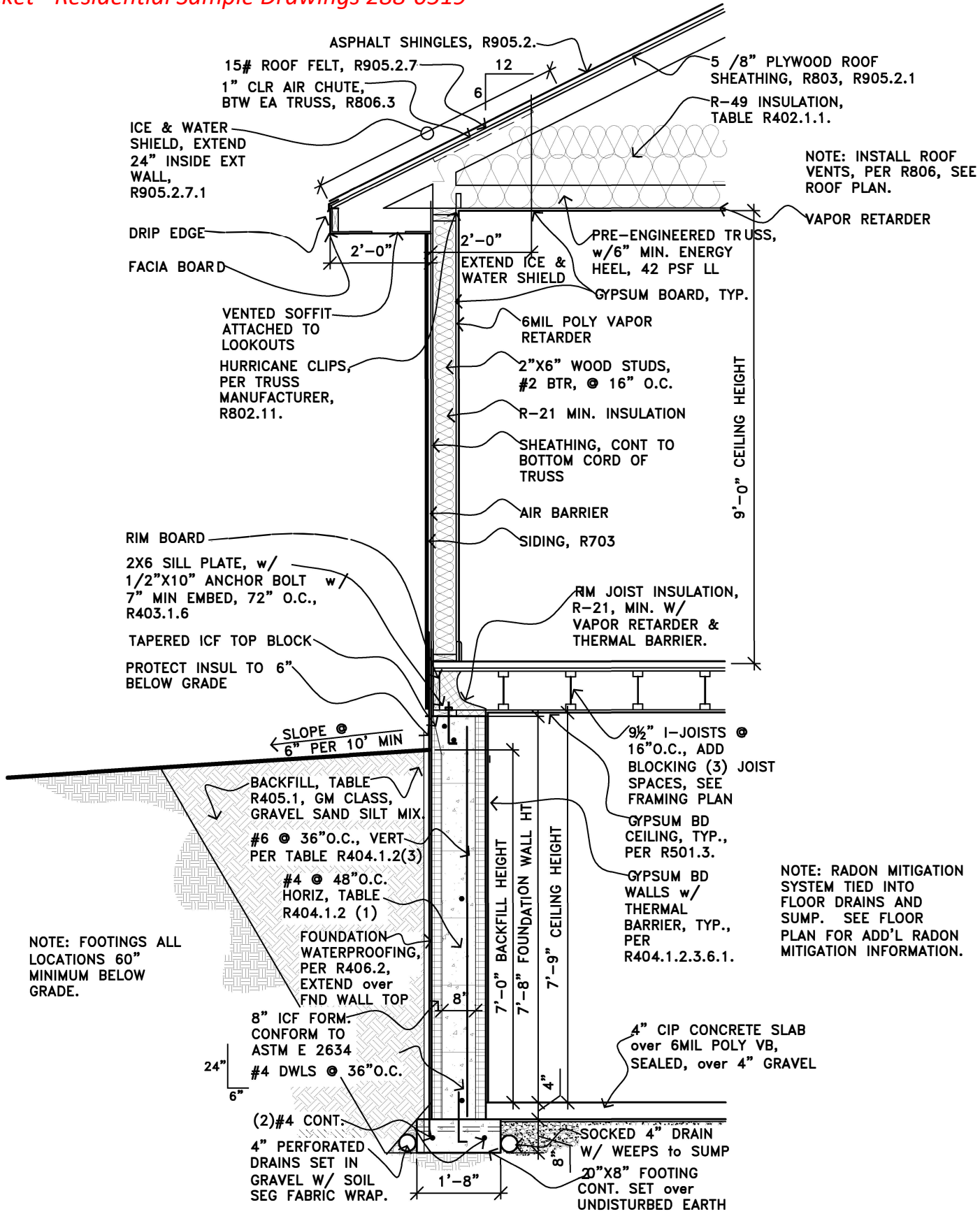
SAMPLE RESIDENTIAL ELEVATION
EXAMPLE NOT FOR CONSTRUCTION

Date: 2/19/2015
Job No.: SAMPLE ELEVATIONS
Drawn By: RDA
Revised: 3/5/2015
Approved By: DWN
Sheet:

A4



THIS PAGE INTENTIONALLY LEFT BLANK



EXAMPLE WALL SECTION

RESIDENTIAL BUILDING CODE

SCALE: 3/8"=1'-0"

Date: 2/13/2015
 Job No.: HANDOUTS
 Drawn By: RDA
 Revised: 3/5/2015
 Approved By: DWN
 Sheet: A6

THIS PAGE INTENTIONALLY LEFT BLANK