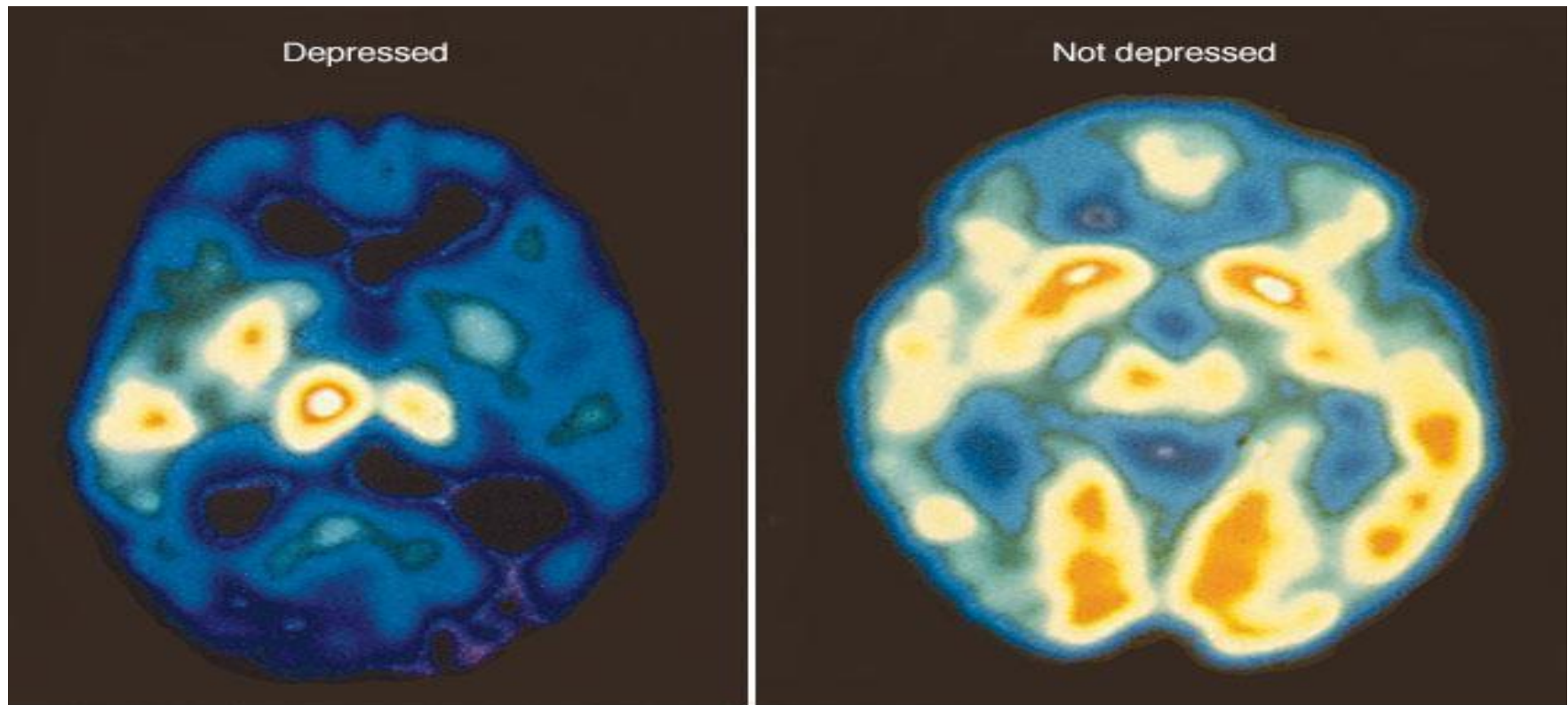


PET scan of neuro-transmission activity in brain with depression (left) and in a brain that is not depressed (right).
(Briefly: more light = more activity, darker = less activity, dark=absent of neurotransmissions, fully unable to complete it's function. *J.Dodge*)



© MAYO FOUNDATION FOR MEDICAL EDUCATION AND RESEARCH. ALL RIGHTS RESERVED.

A PET scan can compare brain activity during periods of depression (left) with normal brain activity (right). An increase of blue and green colors, along with decreased white and yellow areas, shows decreased brain activity due to depression. Original article: <https://www.mayoclinic.org/tests-procedures/pet-scan/multimedia/-pet-scan-of-the-brain-for-depression/img-20007400>