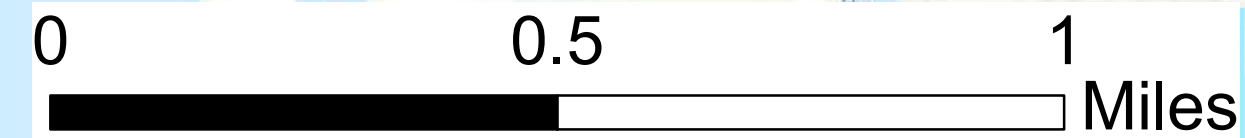
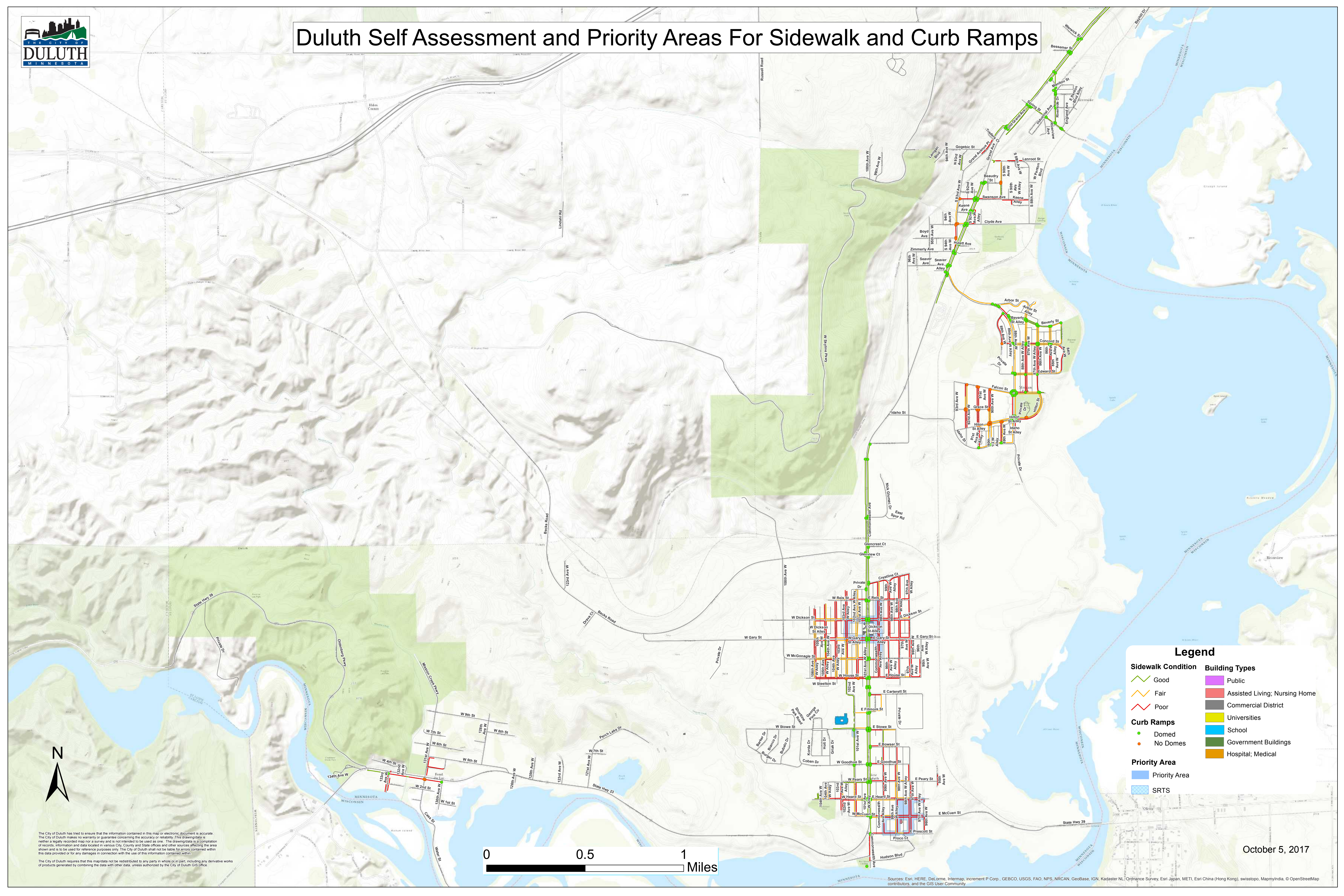




Duluth Self Assessment and Priority Areas For Sidewalk and Curb Ramps



Legend

Sidewalk Condition	Building Types
Good	Public
Fair	Assisted Living; Nursing Home
Poor	Commercial District
Curb Ramps	Universities
Domed	School
No Domes	Government Buildings
Priority Area	Hospital; Medical
Priority Area	
SRTS	

The City of Duluth has tried to ensure that the information contained in this map or electronic document is accurate. The City of Duluth makes no warranty or guarantee concerning the accuracy or reliability. This drawing/data is neither a legally recorded map nor a survey and is not intended to be used as one. The drawing/data is a compilation of records, information and data located in various City, County and State offices and other sources affecting the area shown and is to be used for reference purposes only. The City of Duluth shall not be liable for errors contained within this data provided or for any damages in connection with the use of this information contained within.

The City of Duluth requires that the map/data not be redistributed to any party in whole or in part, including any derivative works of products generated by combining the data with other data, unless authorized by the City of Duluth GIS office.

October 5, 2017

Sources: Esri, HERE, DeLorme, Intermap, increment P Corp., GEBCO, USGS, FAO, NPS, NRCAN, GeoBase, IGN, Kadaster NL, Ordnance Survey, Esri Japan, METI, Esri China (Hong Kong), swisstopo, MapmyIndia, © OpenStreetMap contributors, and the GIS User Community