



FOR IMMEDIATE RELEASE
City of Duluth - Communications Office

411 West First Street, Duluth, Minnesota 55802
218-730-5230 | www.duluthmn.gov | Emily Larson, Mayor

For more information contact Pakou Ly, Public Information Coordinator 218-730-5309

DATE: 2/12/2016

SUBJECT: Public Meeting Scheduled on Arrowhead Road Land Use Study

BY: Pakou Ly, Public Information Coordinator

Public Meeting Scheduled on Arrowhead Road Land Use Study

[Duluth, MN] - The City of Duluth invites the public to a Planning division meeting regarding land use and development along Arrowhead Road, from Rice Lake Road/Arlington Avenue to just west of Swan Lake Road. The study area also includes properties along the east side of Rice Lake Road.

The City's Comprehensive Land Use Plan, adopted in 2006, designated future land uses for the area (see map). The City is studying factors such as existing land uses, utilities and roadways, and natural resources to determine whether any changes to this Future Land Use are warranted. Any changes to future land uses would mean that property owners may be able to apply to rezone properties in the future.

The public meeting to discuss the proposed study area is scheduled for **Tuesday, February 23, 2016, from 5:00 – 6:30 pm** at Eastridge Church, 3727 W Arrowhead Road. This will be an open house with materials available for review and input; allowing for the public to attend as their schedule permits.

A summary memo including recommendations for future land uses in this study area will be on the agenda for the **monthly Planning Commission Meeting on Tuesday, April 12, 2016, at 5:00 pm** in the Council Chambers of Duluth City Hall. In conjunction with this Commission meeting, a public hearing will be held regarding any proposed changes to the Comprehensive Land Use Plan.

A staff report for the Planning Commission meeting will be available for public review by Thursday afternoon, April 7, at the Main Public Library (Reference Department), 520 West Superior Street and at all branch libraries by Friday, April 8. The staff report will also be posted to the City's website: www.duluthmn.gov/planning.

Questions or comments can be directed to Jenn Reed Moses at (218) 730-5328 or send an e-mail to jmoses@duluthmn.gov

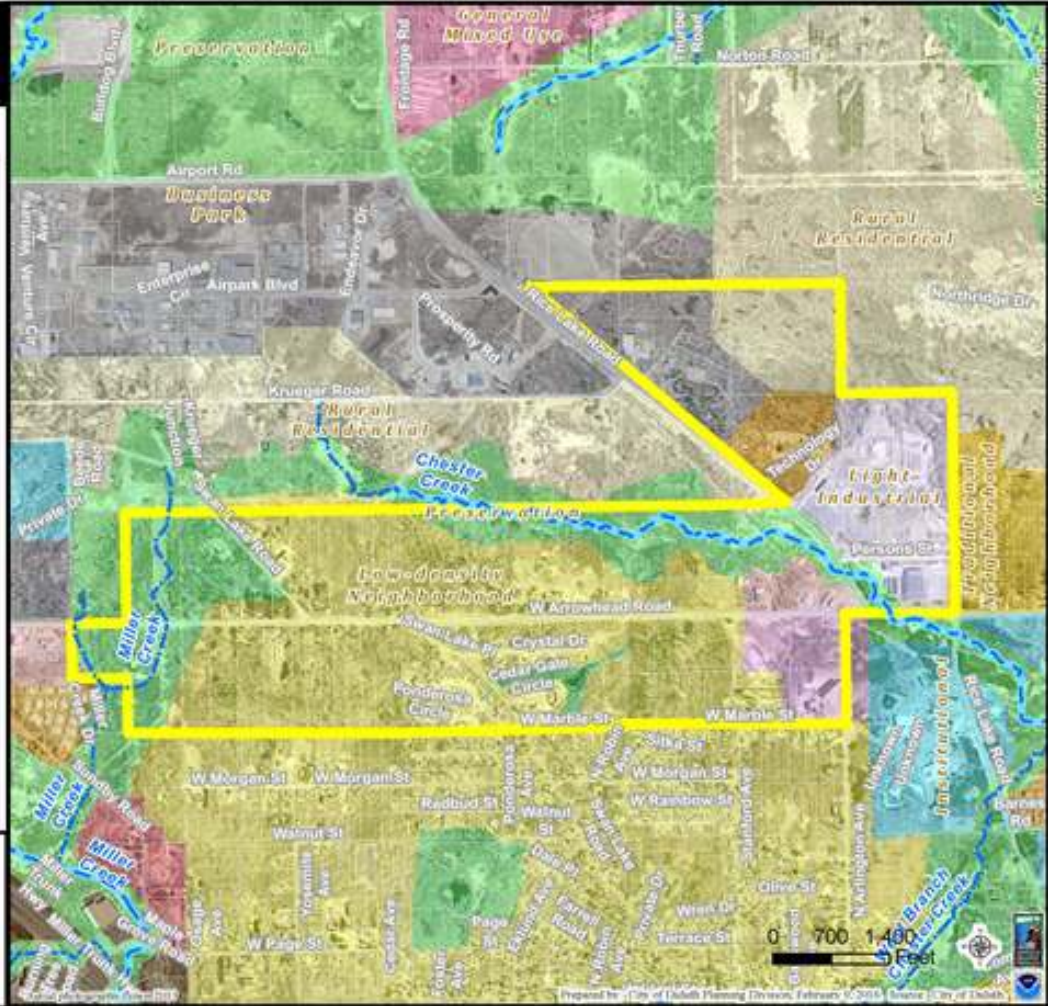
###

Legend

- Trout Stream (GPS)
- Other Stream (GPS)
- Arrowhead Road Study Area

Future Land Use

- Preservation
- Recreation
- Rural Residential
- Low-density Neighborhood
- Traditional Neighborhood
- Urban Residential
- Neighborhood Commercial
- Neighborhood Mixed Use
- General Mixed Use
- Central Business Secondary
- Central Business Primary
- Auto Oriented Commercial
- Large-scale Commercial
- Business Park
- Tourism/Entertainment District
- Medical District
- Institutional
- Commercial Waterfront
- Industrial Waterfront
- Light Industrial
- General Industrial
- Transportation and Utilities



The City of Duluth has tried to ensure that the information contained in this map or electronic document is accurate. The City of Duluth makes no warranty or guarantee concerning the accuracy or reliability. This planning data is neither a legally recorded map nor a survey, and is not intended to be used as one. The planning data is a compilation of records, information and data located at various City, County and State offices and other sources affecting the area shown and is to be used for reference purposes only. The City of Duluth shall not be liable for errors contained within this data provided or for any damages in connection with the use of this information contained within.

Prepared by: City of Duluth Planning Division, February 1, 2013. Source: City of Duluth.